

PASSING by

FREEDOM COMES

FROM LETTING GO...



JOEY LEUNG

梁祖彝

4 August - 8 September 2023

Opening reception:

Friday 4 August 2023 | 6 - 9pm

(artist present)



“Passing by”, a solo exhibition by Hong Kong artist and photographer **Joey Leung**, evokes a state of contemplation, with his ceramic sea animals evoking the quiet lives of those in living in time with the sea while he also finds a sense of humour through dark motifs splashed on paper.



Kraken | Mixed media ceramics, projector, wood, 42 x 49 cm, 2023



Passing by 昼夜望潮 | Ceramic, 40 x 20 cm, 2023



Mountain | Ceramic, 46 x 41 cm, 2016



Kiss | Ceramic, 49 x 21 cm, 2016



Sisters | Stone white, iron glaze, board, red LED, 43 x 46 cm, 2022



Dragon and octopus | Ceramic, 45 x 18 cm, 2023



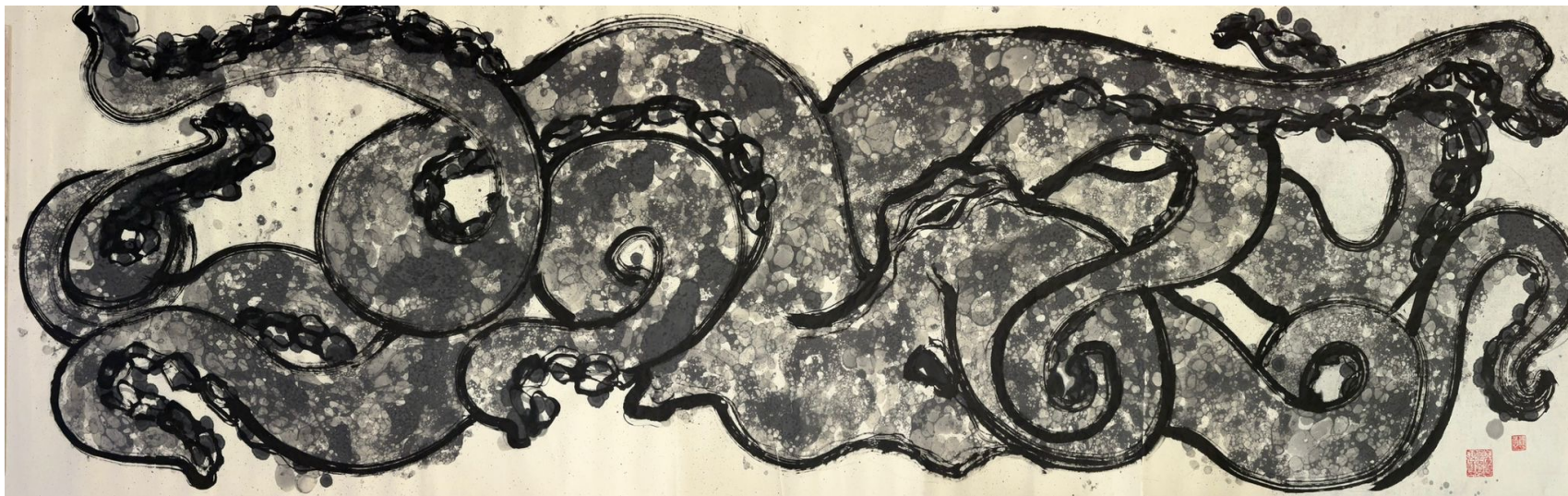
Chill | Stone white, iron glaze, underglaze, transparent glaze, 44 x 13 cm, 2022



Hugging | Stone white, iron glaze, 30 x 21 cm, 2022



Joey seeks the sense of freedom that comes with being present, like a fisherman observing the tide, while contemplating the complexities inherent in this act when facing the realities of life.



Passing by 昼夜望潮 | Ink on rice paper, 221 x 70 cm, 2023



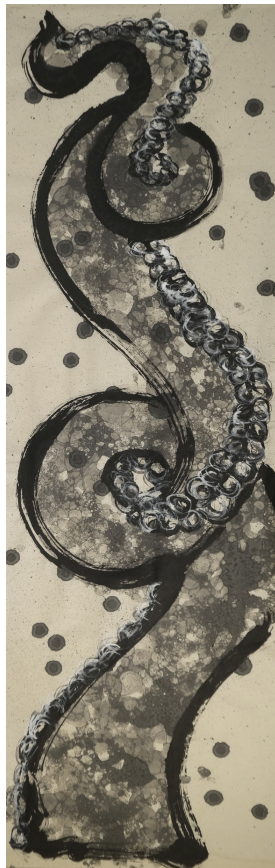
Whale shark | Ink on rice paper, 70 x 118 cm, 2020



Octopus | Ink on rice paper, 70 x 137 cm, 2016



Buffalo | Ink on rice paper, 46 x 90 cm, 2018



Tentacle 蛸足 | Ink on rice paper, 102 x 36 cm, 2023



Squid 魷 #1 | Ink on rice paper, 86 x 38 cm, 2018



The emphasis of marine creatures as a symbol is part of Joey's search for social traditions, while recording the happenings in current society and predicting how people can enjoy or preserve their life in the future.



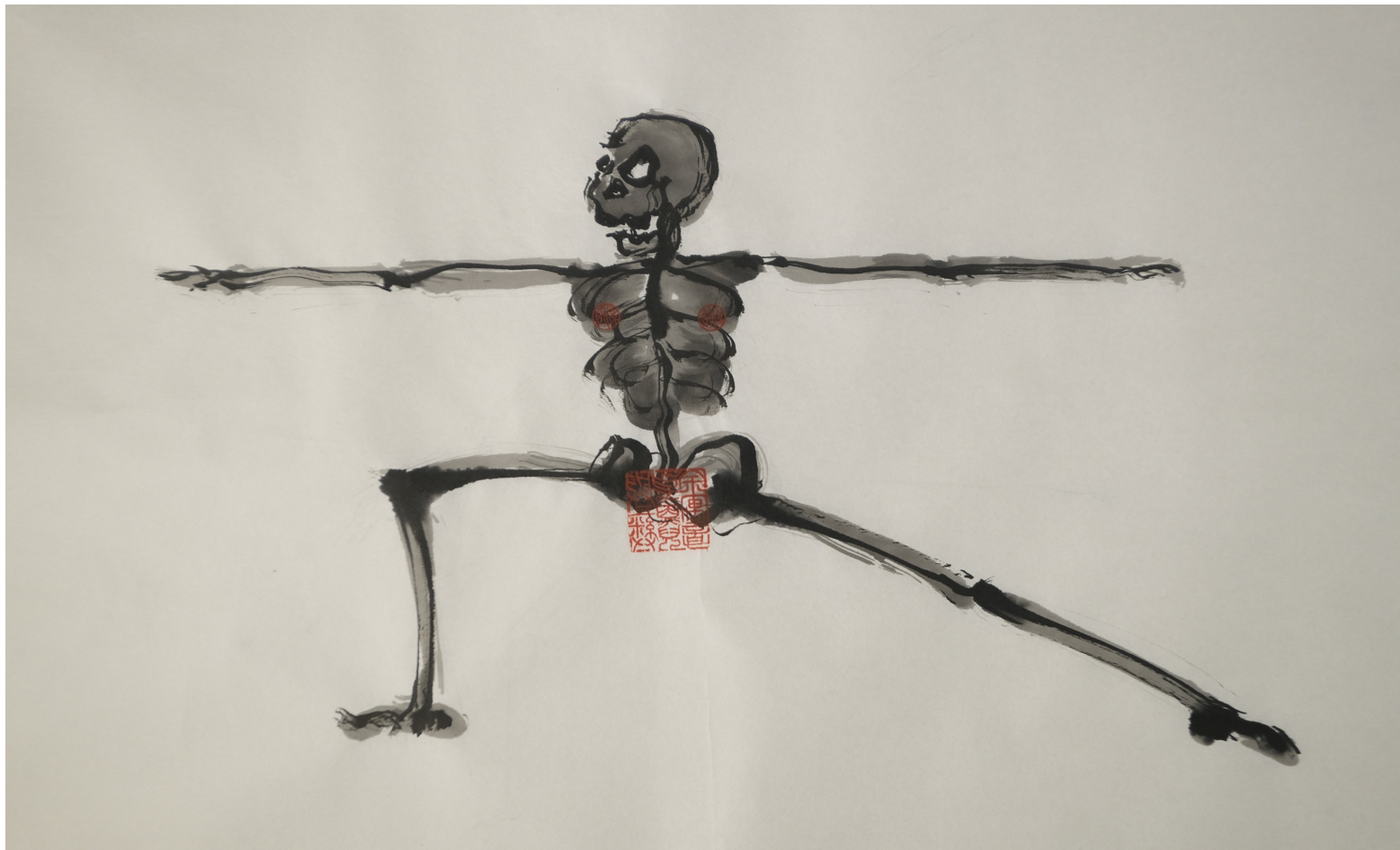
Squid 魷 #2 | Ink on rice paper, 150 x 38 cm, 2018



King crab 長脚蟹 | Ink on rice paper, 80 x 70 cm



Squid魷 #3 | Ink on rice paper, 60 x 38 cm, 2018



Yoga bone #1 | Ink on rice paper, 75 x 46 cm, 2017 – 2022



Yoga bone #2 | Ink on rice paper, 71 x 46 cm, 2017 – 2022



Love bone #1 | Ink on rice paper, 60 x 46 cm, 2017 – 2022



Love bone #2 | Ink on rice paper, 62 x 46 cm, 2017 – 2022



Idlesdeath #45 | Ink on cartridge paper, 21 x 15 cm, 2019 – 2023



Idlesdeath #15

Ink on cartridge paper

21 x 15 cm

2019 – 2023



Idlesdeath #16

Ink on cartridge paper

21 x 15 cm

2019 – 2023

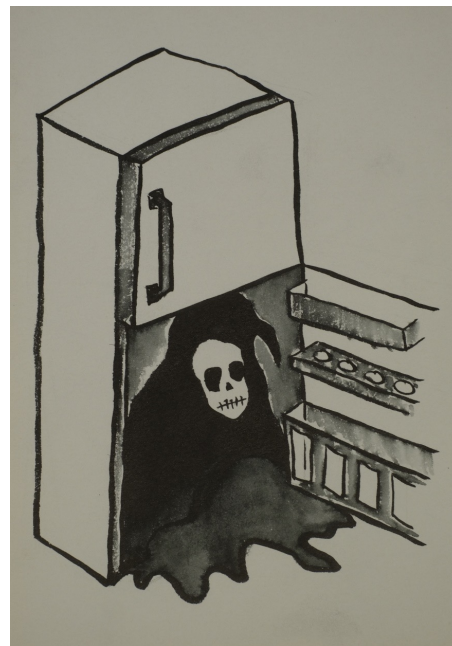


Idlesdeath #22

Ink on cartridge paper

21 cm x 15 cm

2019 – 2023



Idlesdeath #25

Ink on cartridge paper

21 x 15 cm

2019 – 2023



Idlesdeath #48

Ink on cartridge paper

21 x 15 cm

2019 – 2023

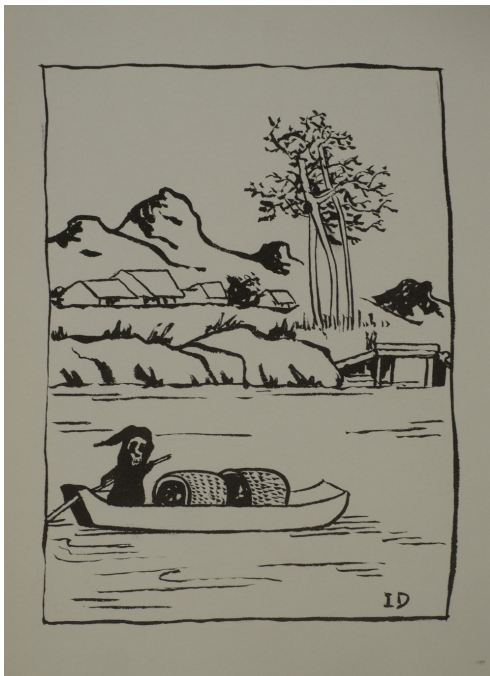


Idlesdeath #52

Ink on cartridge paper

21 x 15 cm

2019 – 2023



Idlesdeath #71

Ink on cartridge paper

21 x 15 cm

2019 – 2023



Idlesdeath #74

Ink on cartridge paper

21 x 15 cm

2019 – 2023

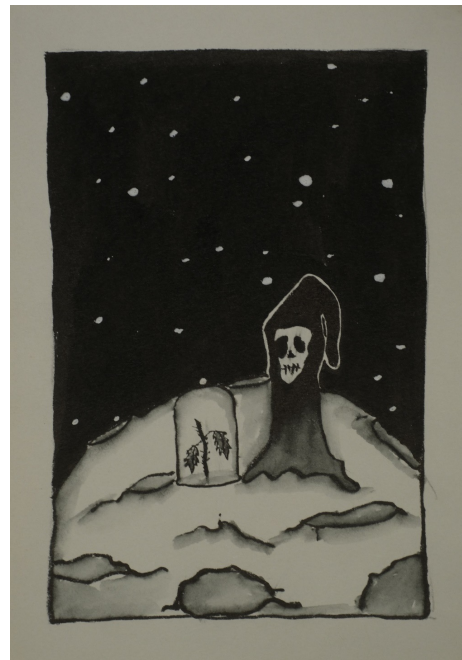


Idlesdeath #78

Ink on cartridge paper

21 x 15 cm

2019 – 2023



Idlesdeath #87

Ink on cartridge paper

21 x 15 cm

2019 – 2023



Idlesdeath #104 | Ink on cartridge paper, 21 cm x 15 cm, 2019 – 2023



Idlesdeath #20

Ink on cartridge paper

21 x 15 cm

2019 – 2023

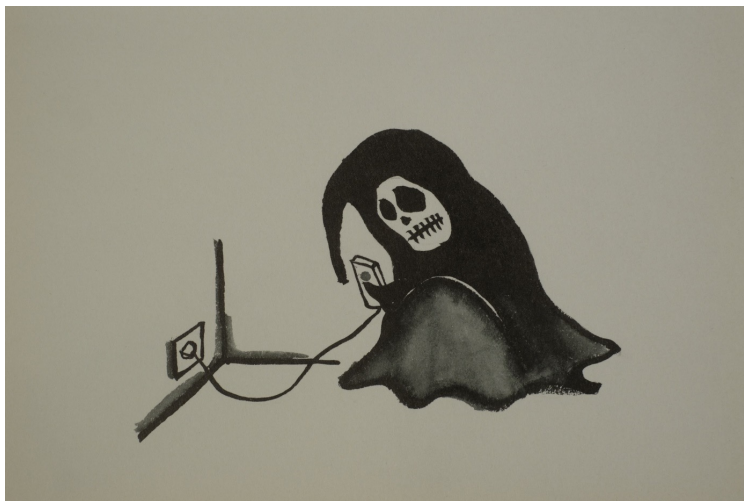


Idlesdeath #24

Ink on cartridge paper

21 x 15 cm

2019 – 2023

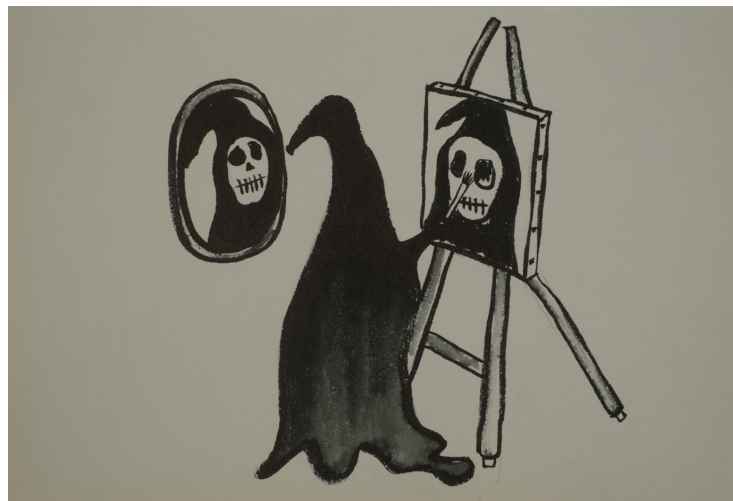


Idlesdeath #28

Ink on cartridge paper

21 x 15 cm

2019 – 2023



Idlesdeath #30

Ink on cartridge paper

21 x 15 cm

2019 – 2023



Idlesdeath #39

Ink on cartridge paper

21 cm x 15 cm

2019 – 2023



Idlesdeath #44

Ink on cartridge paper

21 cm x 15 cm

2019 – 2023

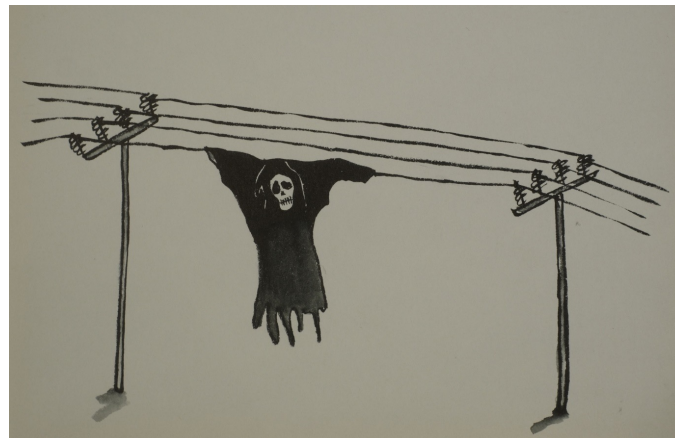


Idlesdeath #49

Ink on cartridge paper

21 cm x 15 cm

2019 – 2023



Idlesdeath #56

Ink on cartridge paper

21 cm x 15 cm

2019 – 2023



Idlesdeath #57

Ink on cartridge paper

21 x 15 cm

2019 – 2023



Idlesdeath #58

Ink on cartridge paper

21 x 15 cm

2019 – 2023



Idlesdeath #62

Ink on cartridge paper

21 x 15 cm

2019 – 2023

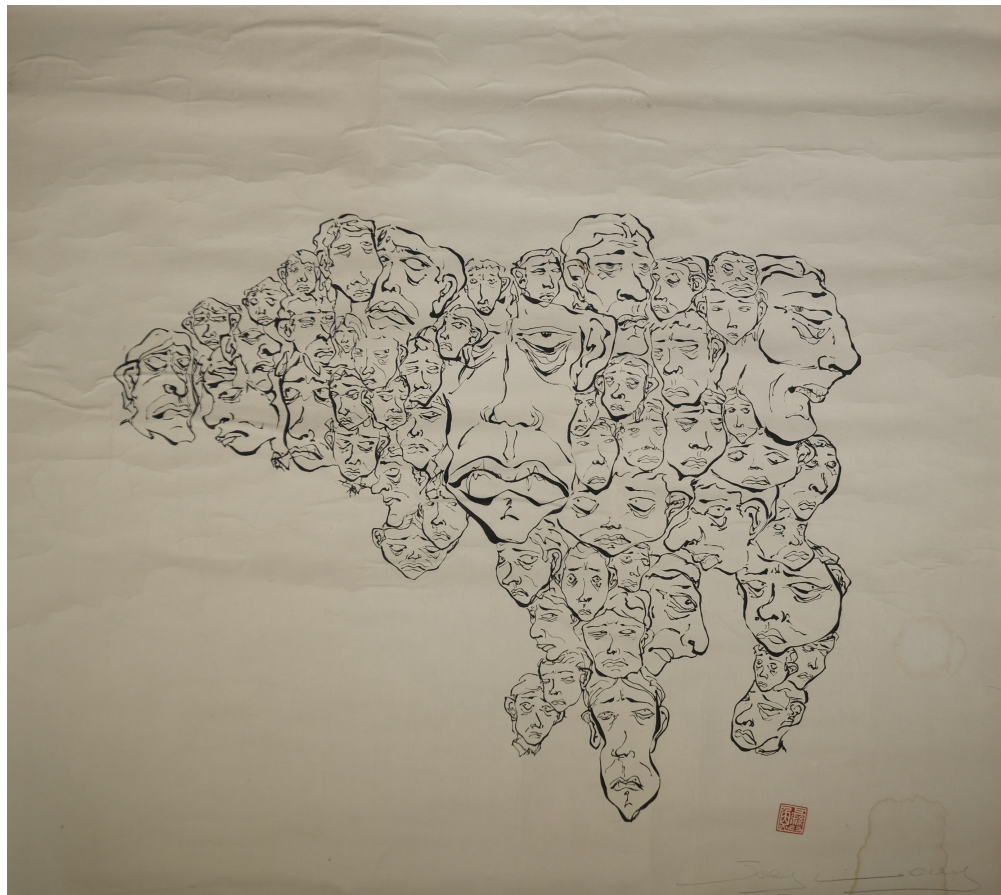


Idlesdeath #103

Ink on cartridge paper

21 x 15 cm

2019 – 2023



West face | Ink on rice paper, 70 cm x 70 cm, 2016



With a skilful grasp on many art mediums, Joey is a professional photographer, a prolific hand at Chinese ink works, and spends much of his time in his ceramic workshop teaching what he loves.



atelier ■ fine art ■ villa

info@sinsinfineart.com

Unit A, 4/F, Kin Teck Industrial Building, 26 Wong Chuk Hang Road, Hong Kong